



ST REGIS

NEW YORK



LEGACY

On September 4, 1904, The St. Regis swung open its ornate bronze doors for the first time, the morning's New York Times heralded it as palatial. At eighteen stories, the property was considered the first skyscraper hotel in America. Colonel John Jacob Astor envisioned The St. Regis to rival the great European hotels. The ornamented interior of sculptured ceilings was complemented with intricate moldings and marble walls with rare Flemish tapestries, Waterford crystal chandeliers and Louis XV and Louis XVI furnishings. The captains of commerce and patrons of the arts immediately accepted The St. Regis New York as if it was their own private club.

ADDRESS

Today, The St. Regis New York is one of the city's most cherished addresses, where magnificent guest rooms and suites set a gilded stage for the St. Regis Butler, heir to a hundred-year legacy of excellence and flawless precision. A beloved landmark, forever at the intersection of timeless tradition and innovation, where epicurean delight achieves new heights at Adour Alain Ducasse, one of Manhattan's most celebrated culinary destinations.

GUEST ROOMS AND SUITES

Sumptuous bedding and antique accents, silk wall coverings, immaculate attention to detail, signature St. Regis Butler service—these are the hallmarks of the St. Regis experience. Settle into one of our 164 guest rooms or 65 suites, featuring custom-made furnishings and elegant touches.

THE KING COLE BAR

Perhaps as well-known for its famous mural as for the cocktail that originated here, The King Cole Bar is the ideal place to enjoy an apéritif. In 1906, Maxfield Parrish was commissioned to paint a mural for The Knickerbocker, which eventually came to rest at The St. Regis New York. Old King Cole has delighted patrons for decades and watched over many an important event, including the birth of the Red Snapper, the original Bloody Mary, in 1934.

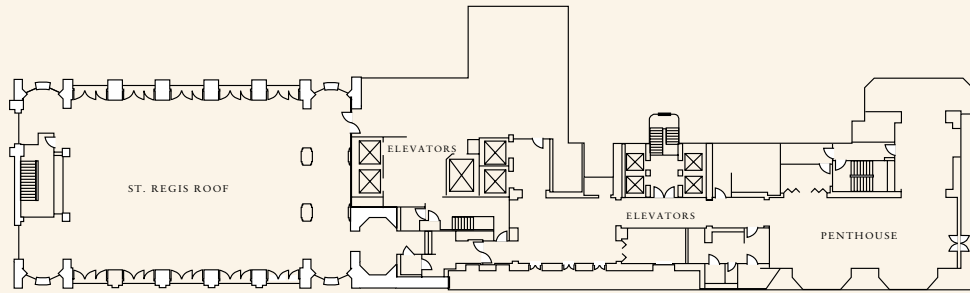
DINING

Set amidst pillars rising to a soaring ceiling framed by hand-painted murals, Astor Court guests can enjoy breakfast, lunch, afternoon tea, dinner and Sunday brunch. Tucked in the heart of the hotel, Adour Alain Ducasse represents a harmonious balance between Chef Ducasse's dedication to culinary arts, the legendary excellence of The St. Regis New York and the vision of modern luxury centered on a wine-inspired theme.

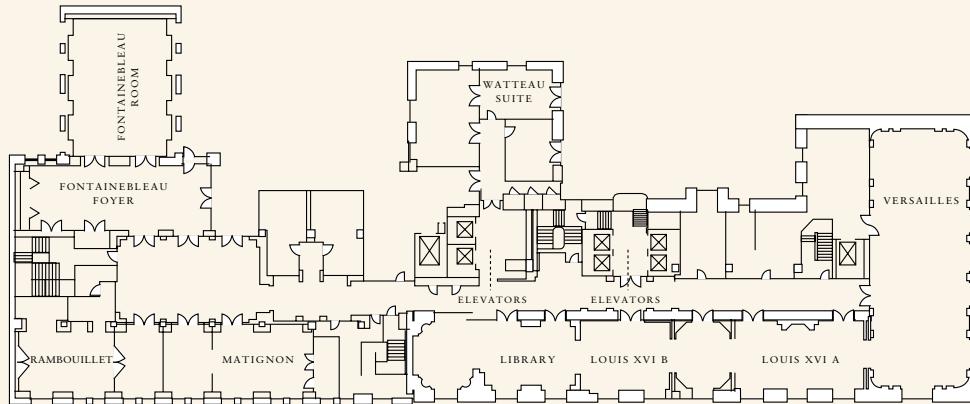
A UNIQUE OCCASION. A LEGENDARY VENUE.

The St. Regis New York has served as the backdrop of the city's most important corporate events and social celebrations for more than a century. The hotel features 14,000 square feet of gathering space, with up to 300 guests accommodated in the largest of its fifteen venues. The impeccable dedication of the highly trained event staff is matched only by the unparalleled creativity of our renowned culinary team, making The St. Regis New York the first choice of the world's most discerning hosts.

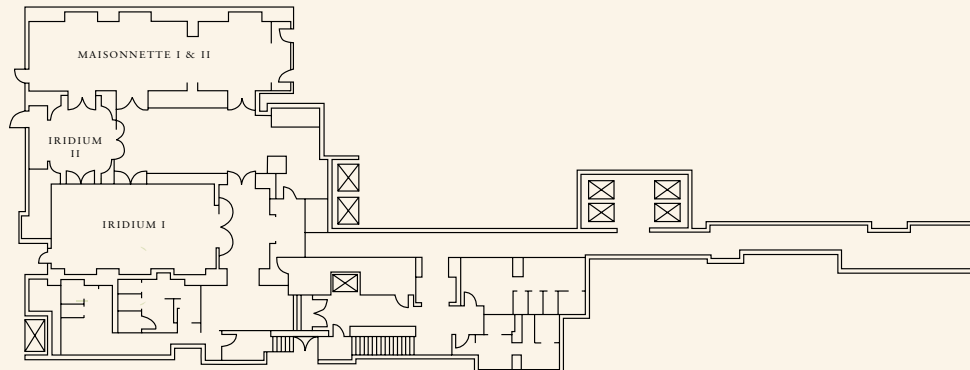




THE ST. REGIS ROOF - TWENTIETH FLOOR BALLROOM



BANQUET AND MEETING FACILITIES - SECOND FLOOR



MAISONNETTE AND IRIDIUM ROOMS

	SQUARE FEET	SQUARE METERS	DIMENSIONS	CEILING HEIGHT	DINNER-DANCE	BREAKFAST, LUNCH, DINNER	COCKTAIL RECEPTION	THEATRE STYLE	CLASSROOM STYLE
ST. REGIS ROOF	4,300	400	85' X 51'	15.8'	220	220	220	220	220
PENTHOUSE	1,530	140	54' X 36'	8.5'	-	74	220	125	60
VERSAILLES	1,860	170	69.5' X 27'	15.5'	130	180	250	200	100
LOUIS XVI-A	710	65	35' X 18.7'	15'	60	60	125	55	60
LOUIS XVI-B	650	60	22.5' X 18.7'	14.4'	-	30	75	45	-
LIBRARY	750	68	28' X 18.5'	15.4'	30	50	80	50	40
WATTEAU	920	83	25' X 17.2'	13.3'	30	30	100	-	-
FONTAINEBLEAU ROOM	791	72	34.3' X 23'	14.8'	50	74	200	74	50
FONTAINEBLEAU FOYER	720	66	45.8' X 16'	8.3'	-	-	-	-	-
RAMBOUILLET	450	50	23.5' X 15'	8.3'	-	-	-	BOARDROOM	12
MATIGNON	369	34	24.5' X 15'	8.3'	-	-	-	BOARDROOM	14
IRIDIUM I	850	78	18' X 37'	10.4'	60	70	150	100	50
IRIDIUM II	225	21	14' X 15'	10.4'	-	20	30	-	-
MAISONNETTE I	700	64	16' X 35'	10.4'	50	50	100	60	40
MAISONNETTE II	360	33	16' X 23'	10.4'	-	30	50	-	-

Floor plan and capacities subject to change in 2008. Maximum capacities are based on selected room set and audio-visual requirements.
 © Starwood Hotels & Resorts Worldwide, Inc. All rights reserved.